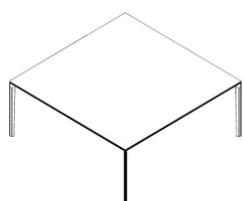


# ADD T

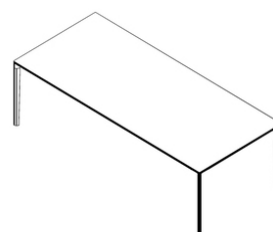
Francesco Rota | 2016

To write, to read, and when the community expands, to work and meet. Minimal as an infinitive verb, the ADD T table caters to the needs of any environment - from the office to dining to private spaces. With a light touch and extreme character, the table shines with its own life and seamlessly complements the ADD seating system. Thanks to the aluminum cast legs that continue to connect the frames, the compositions multiply, enriched by the tabletop finishes - white fenix, black fenix, oak, and open-pore black. Hidden and anchored beneath the surface, the cables flow. On the tabletop, sockets and power supplies for smart workstations. In the air, the serenity of a day where everything is easy.

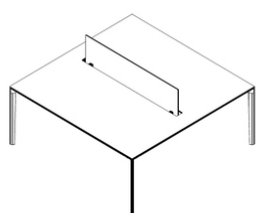




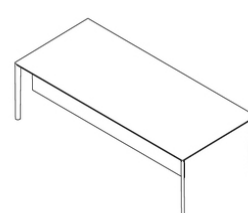
Square



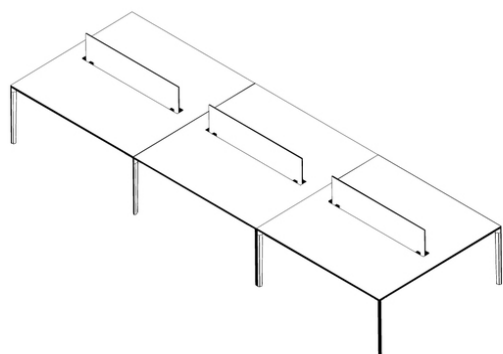
Rectangle



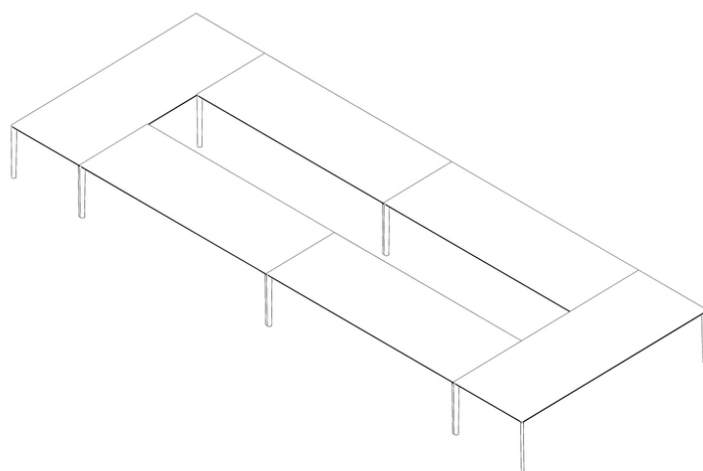
Privacy screen



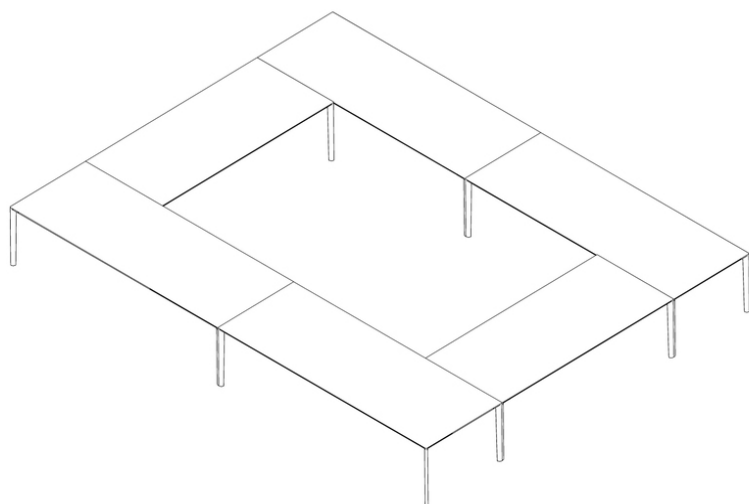
Modesty screen



Linked



Rectangular conference



Square conference

# ADD T

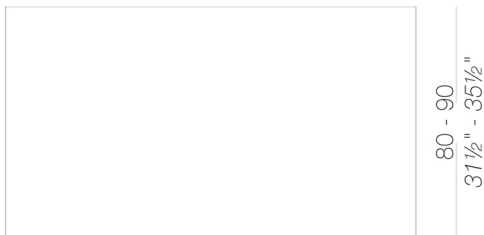
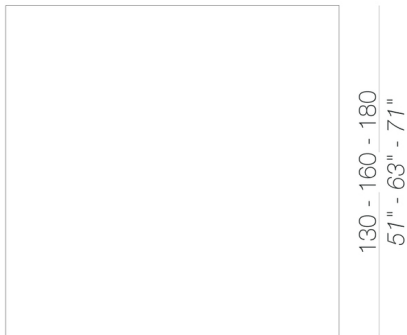
Francesco Rota | 2016

Modular system of tables with frame in aluminium extrusion and die-cast aluminium corner and linking legs, all powder coated, which allows several configurations. Tops available in HPL Fenix® 10 mm or veneered in wood in several finishes.

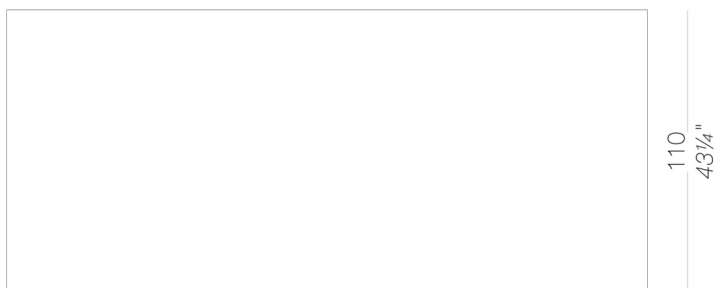
## legs



## tops



160 - 180 - 200  
63" - 71" - 78<sup>3</sup>/<sub>4</sub>"

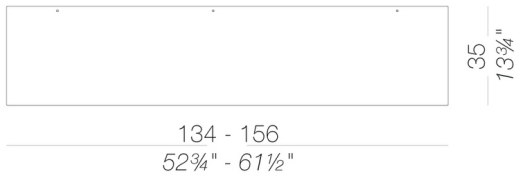


250 - 300  
98<sup>1</sup>/<sub>2</sub>" - 118"

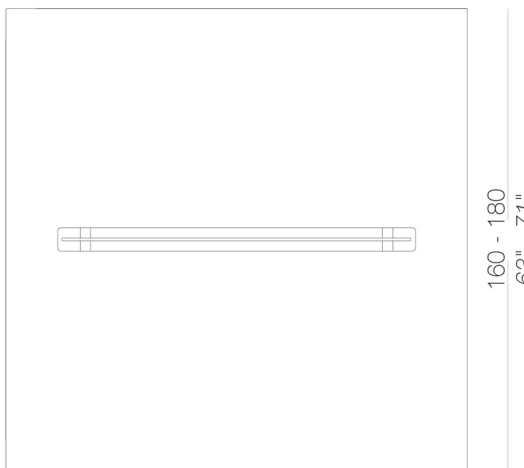
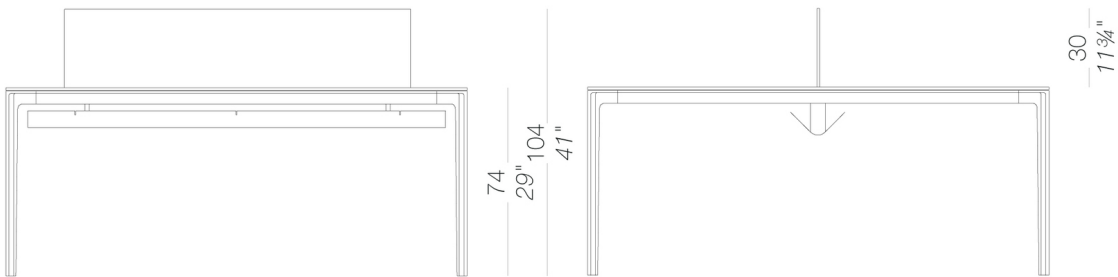
# ADD T

Francesco Rota | 2016

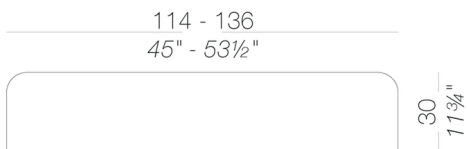
## modesty panel



## desk with partition panel and metal tray for cabling



## partition panel



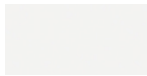
# ADD T

Francesco Rota | 2016

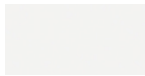
## frame



powder coating  
black  
1 Colors



powder coating  
white  
1 Colors

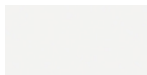


powder coating  
white  
1 Colors

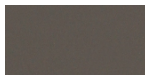
## top



HPL 10 mm  
black HPL fenix  
1 Colors



HPL 10 mm  
white HPL fenix  
1 Colors



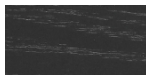
HPL 10 mm  
HPL fenix grigio  
Londra  
1 Colors



HPL 10 mm  
HPL fenix rosso  
Jaipur  
1 Colors



wood  
blached oak  
1 Colors



wood  
black open pore  
1 Colors

## partition panel



fabric  
Hallingdal 65 -  
Grade C  
58 Colors



fabric  
Canvas 2 - Grade C  
45 Colors



fabric  
Steelcut Trio 3 -  
Grade D  
54 Colors



fabric  
Remix 3 - Grade C  
72 Colors



fabric  
Clara 2 - Grade C  
24 Colors



fabric  
Fiord 2 - Grade C  
39 Colors



fabric  
Divina MD - Grade D  
27 Colors



fabric  
Divina Melange 3 -  
Grade D  
38 Colors



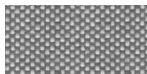
fabric  
Tonica 2 - Grade C  
39 Colors



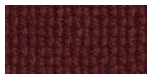
fabric  
Medley - Grade A  
37 Colors



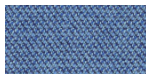
fabric  
Jet - Grade A  
66 Colors



fabric  
Maya - Grade A  
43 Colors



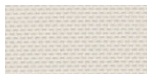
fabric  
Lapalma Smart -  
Grade C  
18 Colors



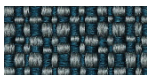
fabric  
Capture - Grade B  
43 Colors



fabric  
Crisp - Grade B  
40 Colors



fabric  
Nattè - Grade B  
30 Colors



fabric  
Illris - Grade B  
24 Colors



fabric  
Steelcut 3 - Grade D  
40 Colors



fabric  
Grain - Grade. B  
50 Colors

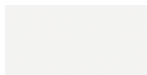


fabric  
Re-wool - Grade C  
21 Colors

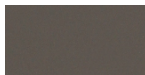
## modesty panel



HPL 10 mm  
black HPL fenix  
1 Colors



HPL 10 mm  
white HPL fenix  
1 Colors



HPL 10 mm  
HPL fenix grigio  
Londra  
1 Colors



HPL 10 mm  
HPL fenix rosso  
Jaipur  
1 Colors

**consult the portfolio for the range of colors, fabrics, eco-leather, soft-leather.**

### use and maintenance instructions

Clean all parts in wood, leather, fabric and metal with a damp cloth or a diluted neutral cleaner. Do not use cleaners with alcohol, bleach, solvent or abrasive products. Any liquid spilt on the product must be wiped up immediately. When lifting or moving the product, hold it on the structure and not under the seat. The product should not be subjected to unbalanced weights, as it is designed for a proper rest on the foothold (on four legs or on the base). Our company relieves from any responsibility in case of damage caused to fragile floors. Avoid any improper use of the product: do not step on the product, on the footrest or on the armrests. Avoid any movements that could compromise the proper functionality of the product or the safety of the users. Wood and leather, being natural materials, could be easily damaged. Small

impurities or imperfections are within quality standard range. Do not expose the product to weather conditions or atmospheric agents, nor to heat sources over 40°C. Also products for outdoor use could be afflicted by atmospheric agents. The product could undergo possible exterior changes due to particular exposure to heat, humidity and saltiness. An appropriate and frequent maintenance and cleaning of the product enhances its durability. The product could change colour and shade, if exposed to direct sunlight. Maintenance has to be carried out by experienced staff. Dispose of the package only after assembling the product, in order to avoid the loss of ironmongery and components. Once the product has been dismantled, the product itself or its components must be given to the public garbage disposal system, according to the legislation in force.



**Francesco Rota** | 2016

Gathering around a table, an action combined with the most important place for a meeting. But only “large” tables know how to be really accommodating. And to be ideal for everyone, the design is minimalist with the most extreme simplicity to make it highly elegant. It is almost like the framework of a leaf that sends sap to every single part. The veins are its die-cast aluminium legs that create a single corner solution or continue with the addition of frames. It is called ADD T, the protagonist of the ADD seating system in any natural and contemporary setting.





# ADD T

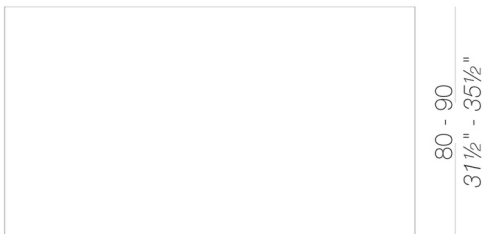
Francesco Rota | 2016

Modular system of tables with frame in aluminium extrusion and die-cast corner and linking legs which allow several configurations. Tops available in HPL Fenix® 10 mm.

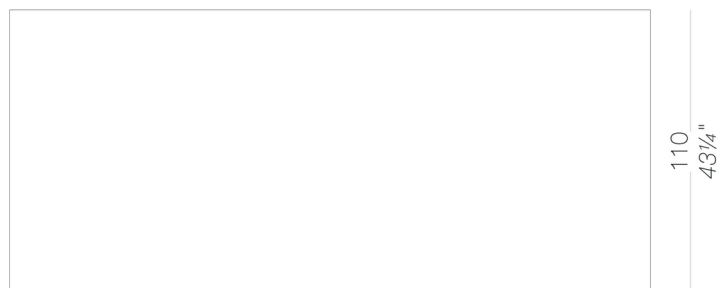
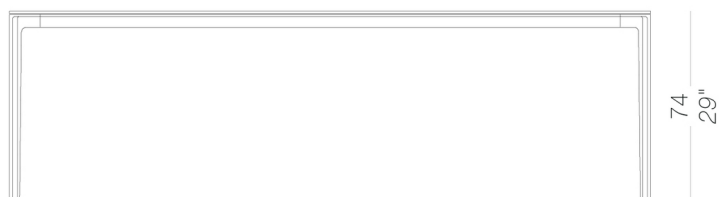
## legs



## tops



160 - 180 - 200  
63" - 71" - 78<sup>3</sup>/<sub>4</sub>"



250 - 300  
98<sup>1</sup>/<sub>2</sub>" - 118"

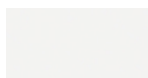
# ADD T

Francesco Rota | 2016

## frame



powder coating  
black  
1 Colors

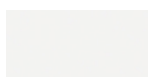


powder coating  
white  
1 Colors

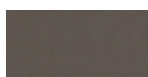
## top



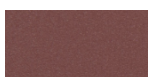
HPL 10 mm  
black HPL fenix  
1 Colors



HPL 10 mm  
white HPL fenix  
1 Colors



HPL 10 mm  
HPL fenix grigio  
Londra  
1 Colors



HPL 10 mm  
HPL fenix rosso  
Jaipur  
1 Colors

## consult the folder of materials for the range of colors

### use and maintenance instructions

Plastic materials, even if intended for outdoor use, may still be attacked over time by particular atmospheric pollutants (e.g. acid rain, high concentration of PM10, nitrogen oxides, hydrocarbons, etc.). Any changes in the surface and in colours may therefore occur under particular conditions of exposure and cannot be considered grounds for any claims.

Do not use detergents containing bleach, hydrochloric acid or products containing chloride on any metal parts. Salt, limescale or acid (from coffee, wine, orange juice, tomato juice, lemon, etc.) may discolour stainless steel parts if they are not promptly cleaned. Products or parts made of stainless steel used near the sea or in interior fittings of swimming pools require more frequent cleaning to remove chloride deposits and prevent corrosion and chemical attack of the external surface. Stains on stainless steel surfaces must be promptly cleaned. If left for a long time they can become permanent.

To prolong the life of the product, clean the surfaces regularly, dry them with a clean cloth and remove any stagnant water, especially if exposed in locations with a high level of humidity or a marine climate.

When not in use, we recommend storing in sheltered places and covering with waterproof protection. In this case, it is advisable to remove the cover and ventilate the product frequently and regularly to avoid the onset of any mould or stains due to damp.

THE WARRANTY WILL NOT COVER DEFECTS OR IMPERFECTIONS RESULTING FROM THE PASSAGE OF TIME OR TO WEAR AND TEAR DUE TO THE NORMAL USE OF THE PRODUCT.