

link 1 shelf/link 2 bench bruno fattorini

description:

Link 1 Shelf and Link 2 bench, is associated with the evolution of current design concept, that goes beyond the traditional vision of pure aesthetic dimension, to be a polyhedral object in which function, simplicity, innovation and project culture are merged. Link1 and Link 2 is a simple and pure sign capable of conversing with different shapes and of aggregating fairly with different products. A "universal" line, useful for every need, conceived to give birth either to endless compositions or end-use opportunities, with a considerable capability of adapting to space and the possibility of changing over time. Shelf available in the following lengths: L180, 210, 240, 270 and L300cm, D48cm H6cm. Only the "shelf" typology is also available in electrified version, with cable management door and back interspace to make cables pass and be hidden. Bench available in the following lengths: L240, L270 and L300cm, D48cm. Height from the ground 45cm, top thickness H6 cm. Only the "bench" typology is completely finished on four sides and can be used in the middle of the room.

materials:

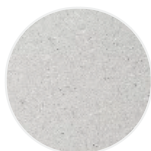
Top made from MD wood fiberboards, coated in white acrylic resin, wood, reconstructed stone or brass sheet. Shelf structure with bearing bracket made from steel powder-coated in matt black. Adjustable inclination with special soft perimeter profile, that enables an easy and perfect installation (to make up for the various irregularities of wall structures). Bench with bearing frame in steel, powder-coated in matt black. Equipped with adjustable feet mechanism. Maximum capacity of 20 kg/ml for the shelf.



Wood



Brass



Reconstructed stone

dimensions:

LINK 1 - SHELF

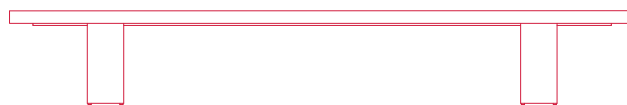
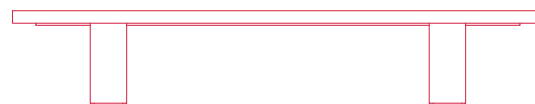
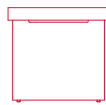


dimensions

L180 P48 H6 (top thickness)	L70-7/8" D18-7/8" H2-3/8" (top thickness)
L210 P48 H6	L82-5/8" D18-7/8" H2-3/8"
L240 P48 H6	L94-1/2" D18-7/8" H2-3/8"
L270 P48 H6	L106-1/4" D18-7/8" H2-3/8"
L300 P48 H6	L118-1/8" D18-7/8" H2-3/8"

also available in electrified version,
with cable management door and back interspace
to make cables pass and be hidden.

LINK 2 - BENCH



dimensions

L240 P48 H6 (top thickness)	L94-1/2" D18-7/8" H2-3/8" (top thickness)
L270 P48 H6	L106-1/4" D18-7/8" H2-3/8"
L300 P48 H6	L118-1/8" D18-7/8" H2-3/8"
Total height: 45 cm	Total height: 17-3/4" cm

Only the "bench" typology is completely
finished on four sides and can be used
in the middle of the room.