

mdf italia



© COPYRIGHT 2024 MDF ITALIA SRL SOCIETA' UNIPERSONALE

2024

FLOW COLLECTION

Designed by Jean Marie Massaud

Born in 2009 from an idea of Jean Marie Massaud, Flow is the iconic seat collection developed to satisfy the different needs of contract and residential sector.

The curved lines and the elegance of its profile combine in a perfect balance of comfort and ergonomics. With over 21.000 available configurations, there is a Flow perfect for any need and style.

The matt finishing of the shell is in harmony with a chromatic range in line with the market trends, in white, lead-gray, terracotta and white gray.

The bases – 4 steel legs, 5-point star base, central leg, VN 4-legged base and 4-legged wood bases – go with a non-upholstered shell, with front upholstered, fully upholstered or leather upholstered.

A particular attention was paid to the ergonomics and padding of the seat to guarantee an enveloping comfort, while wood takes on the tones of the bleached oak stained wood, natural, brown and canaletto walnut stained wood with bases with soft and fluid shapes.

The Flow collection distinguishes for its strong engagement towards SUSTAINABILITY: created with recycled materials, 73% of polycarbonate used in the shell come from renewable sources, while wood used for the basis comes from sustainable managed forests, respecting strict environmental standards along the whole production process.

The typological proposal of Flow ranges from Chair to Armchair, including Stool and Pouf.

SHELL AND BASE VARIANTS

The Flow seating offers two shell designs, Chair and Armchair, with a wide range of finishes, fabrics, and materials, which can be combined with five bases to generate a wide range of commercial possibilities.

CHAIR AND ARMCHAIR, 4 SHELL VARIANTS:

1. Unupholstered
2. Front upholstered
3. Fully upholstered
4. Fixed leather cover

5 BASE VARIANTS THAT CAN BE COMBINED WITH THE 4 SHELL VARIANTS:

1. 4-legged base made of steel rod.
2. Height-adjustable 5-point-star base on castors, made of die-cast aluminium, height adjuster (41.2/51.2 cm). 360° swivel.
3. Base with central leg, made of powder-coated aluminium. 360° swivel.
4. VN 4-legged wood base, structure in ash* with transparent lacquer. 360° swivel.
5. 4-legged wood base, structure in ash* with transparent lacquer. 360° swivel.

DOWNLOAD THE DATA SHEET BELOW AND DISCOVER ALL THE TECHNICAL CHARACTERISTICS.

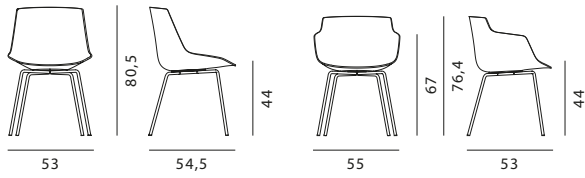
Abac us

Flow Chair

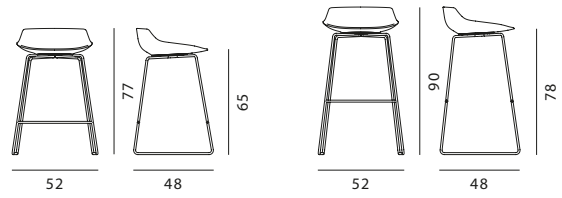
Flow Armchair

Flow Stool

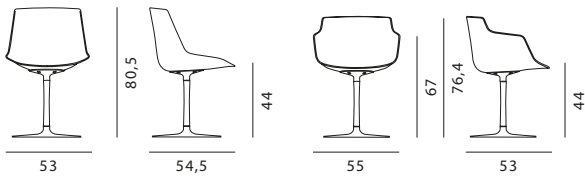
4-legged base



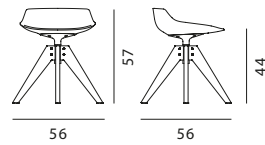
sled



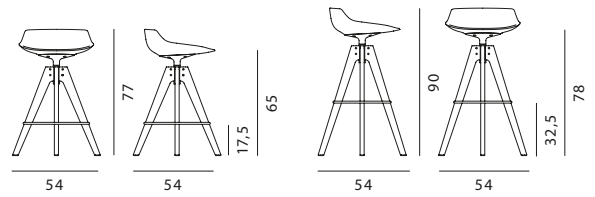
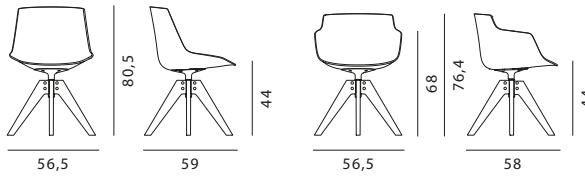
base with central leg



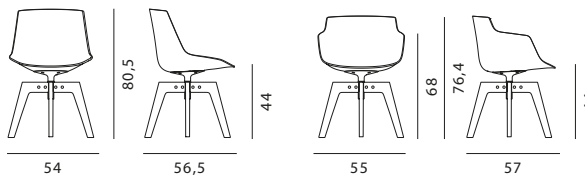
VN 4-legged wood base



VN 4-legged wood base

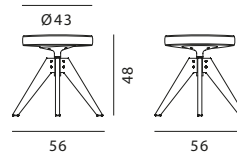


4-legged wood base

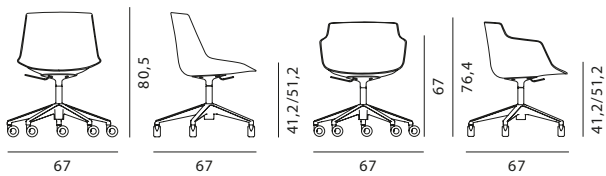


Flow Pouf

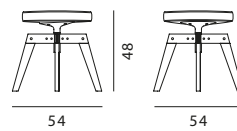
VN 4-legged wood base



height-adjustable 5-point-star base on castors



4-legged wood base



Variants



unupholstered front upholstered fully upholstered fixed leather cover

Finish options

BASE

Wood bases



canaletto
walnut
stained wood



natural oak
stained wood



bleached oak
stained wood

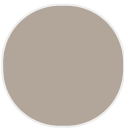


brown oak
stained wood

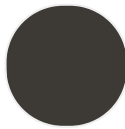
Matt painted bases



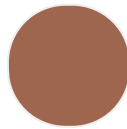
matt painted
white X053



matt painted
light grey



matt painted
lead grey



matt painted
terracotta

SHELL

Matt painted



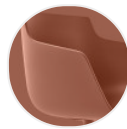
white X112



light grey
X200



lead grey
X114



terracotta
X201

COVER

Fabric or leather