

mdf italia



© COPYRIGHT 2021 MDF ITALIA SRL SOCIETÀ UNIPERSONALE

2014-2020

ROCK TABLE

Designed by Jean Marie Massaud

The iconic table, with its fluid and elegant silhouette, completely reveals the nature of what it represents: “a round table” that seems to float above a solid, inorganic base. A mixture of natural and industrial materials that are blended to create a new product with a smooth design, following the same philosophy of Flow collection. A refined solid object, light and stable, radical as well as sensual. Rock Table unique style, based on simplified shapes, is combined with innovative production systems and this makes MDF Italia tables suitable not only to modern living rooms, but also to lounge designs and working contexts, such as offices, meeting rooms, conference rooms with a strong identity.

In 2020 Rock Table will be enhanced with new outdoor finishes: white stone chip cement top, combined with the natural cement base. Green stone chip cement top combined with a green cement base. Terracotta stone chip cement top combined with a terracotta colour cement base.

[DOWNLOAD CATALOGUE](#)

OUTDOOR USE

The table with cement top and stone chip cement top are also suitable for outdoor.

OUTDOOR COVERING TARPAULIN

Protective tarpaulin specifically for outdoor products, waterproof, made of 100% polyester, outside with acrylic coating, inside with acrylic resin coating.

Its characteristics are emphasised by its fully fungicidal Teflon finish.

Each tarpaulin comes with a closable slip cover, so that it can be folded and kept correctly when not in use.

TABLETOP WITH BASES IN NATURAL CEMENT

- MD-wood fibreboard in thickness 25mm with finished edge, in white matt lacquer with a scratch-proof finish (80, 100, 120, 140cm);
- white UHPFRC cement (ultra-high performance fibre-reinforced cement) with cutting-edge technical/structural properties (80, 100, 120, 140cm);
- white UHPFRC stone chip cement (ultra-high performance fibre-reinforced cement) with cutting-edge technical/structural properties (80, 100, 120, 140cm);

TABLETOP WITH BASES IN ANTHRACITE GREY CEMENT

- MD-wood fibreboard in thickness 25mm with finished edge, matt grey lacquer with a scratch-proof finish (80, 100, 120, 140cm);
- anthracite UHPFRC cement (ultra-high performance fibre-reinforced cement) with cutting-edge technical/structural properties (80, 100, 120, 140cm);
- smoked tempered glass in thickness 12mm (120, 140cm tabletops);

TABLETOP WITH BASES IN GREEN OR TERRACOTTA CEMENT

- green or terracotta UHPFRC stone chip cement (ultra-high performance fibre-reinforced cement) with cutting-edge technical/structural properties (80, 100, 120, 140cm);

BASES

The bases are made of UHPFRC (ultra-high performance fibre-reinforced cement) with cutting-edge technical/structural properties.

A fundamental characteristic of the components is mass colouration. The finish and colour of the table bases is the result of a skilled mixture of sand and natural elements. Together with the slow maturation and drying given to each piece, this allows countless subtle shades to be obtained.

Two types of bases: narrow with 80 and 100cm large tabletops or wide with 120 and 140cm large tabletops. H110 or 73cm for tables with narrow bases, H 73cm (or 71.5 with top in smoked glass) for tables with wide base.

TABLES WITH WIDE BASE

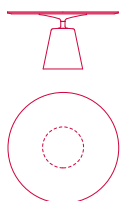


TABLE Ø140 H1.5* and H73 cm
BASE Ø50 H51 cm



TABLE Ø120 H1.5* and H73 cm
BASE Ø50 H51 cm

*tables with glass top H 71.5 cm

TABLES WITH NARROW BASE

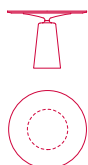


TABLE Ø100 H73 cm
BASE Ø34 H57 cm



TABLE Ø80 H73 cm
BASE Ø34 H57 cm

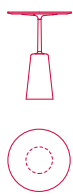
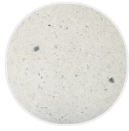


TABLE Ø80 H110 cm
BASE Ø34 H57 cm

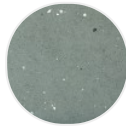
Finish options

TOP

Stone chip cement



White stone
chip cement



Green stone
chip cement

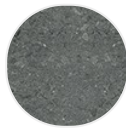


Terracotta
stone chip
cement

Cement



Cement white



Cement
anthracite

Matt lacquered

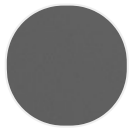


Matt
lacquered
white X042



Matt
lacquered
graphite grey
X082

Glass



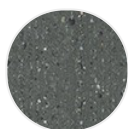
Smoked grey
tempered
glass

STRUCTURE

Cement



Cement
natural X080



Cement
anthracite
X081



Cement green



Cement
terracotta