



© COPYRIGHT 2023 MDF ITALIA SRL SOCIETA' UNIPERSONALE

2023

## ROCK TABLE MINI

Designed by Jean Marie Massaud

The Rock Table family also includes the Mini Rock Tables: coffee tables with a strong personality, in which the lines of the collection are appropriately repropotioned to create furnishing accessories for the indoor or outdoor living space. These tables come with tops in three different heights and sizes, a trio useful for creating a wide range of compositions.

### DIMENSIONS

The tops are combined with the relative heights:

- top Ø60 cm, table height 53 cm;
- top Ø80 cm, table height 46 cm;
- top Ø100 cm, table height 39 cm.

### TABLETOP

. LAQUERED. Medium density wood fibre panel, 25 mm thick, machined on the edge, and painted matt white or matt graphite grey. Tops: 80, 100, 120, 140 cm.

. CEMENT. In white or anthracite UHPFRC cement (ultra high performance, fibre reinforced cement), with high technical / structural characteristics. Tops: 80, 100, 120, 140, 250 e 300 cm.

. STONE CHIP CEMENT. In UHPFRC (ultra high performance, fibre reinforced cement), with high technical / structural characteristics, coloured in mass using natural oxides, enhanced with a stone chi surface made up of Alpine rocks and stones (white and green stone chip top), or stone chip made up of stones from Tuscany (terracotta top). Tops: 80, 100, 120, 140, 250 e 300 cm.

. WOOD. Panel in veneered 25 mm thick medium density wood fibre in bleached or brown-stained oak, or Canaletto walnut. The edge of the top and underside are lacquered matt white (bleached oak version) or matt graphite grey (brown or Canaletto walnut version).

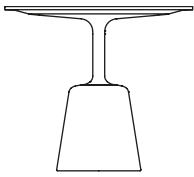
## MONOCHROME COMBINATIONS

- . WHITE VERSION. Base in natural cement, matt white tube and flange, lacquered white, white cement, bleached oak wood or white stone chip cement top.
- . ANTHRACITE VERSION. Base in anthracite cement, matt anthracite tube and flange, lacquered anthracite grey, brown oak wood, Canaletto walnut wood or anthracite cement top.
- . ORANGE VERSION. Base in terracotta cement, matt orange tube and flange, terracotta stone chip cement top.
- . GREEN VERSION. Base in green cement, matt green tube and flange, green stone chip cement top.

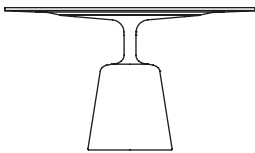
## OUTDOOR USE

The table with cement top and stone chip cement top are also suitable for outdoor.

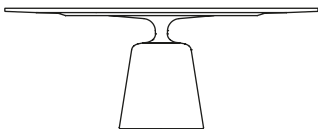
**ROCK LOW TABLES**



LOW TABLE Ø60 H53  
BASE Ø27 H28



LOW TABLE Ø80 H46  
BASE Ø27 H28



LOW TABLE Ø100 H39  
BASE Ø27 H28

# Finishing

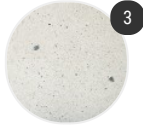
The number in the dot corresponds to the number of colour/material finish.

Here below, in the section FINISH OPTIONS, please note all the colours of the materials used for this product.

## LOW TABLES

---

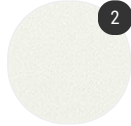
### Top



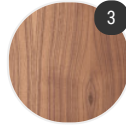
Stone chip cement



Cement



Matt lacquered



Wood

---

### Structure



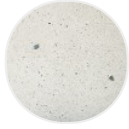
Cement

# Finish options

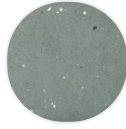
## TOP

---

### Stone chip cement



White stone  
chip cement



Green stone  
chip cement

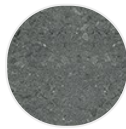


Terracotta  
stone chip  
cement

### Cement



White cement



Anthracite  
cement

### Matt lacquered



Matt  
lacquered  
white X042



Matt  
lacquered  
graphite grey  
X082

### Wood



Canaletto  
walnut



Bleached oak  
X075



Brown oak  
X076

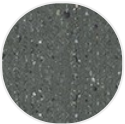
## STRUCTURE

---

Cement



Cement  
natural X080



Cement  
anthracite  
X081



Cement green



Cement  
terracotta