



sharky stool neuland, paster & geldmacher

Stools available in two heights with seats in different shapes with wood legs.

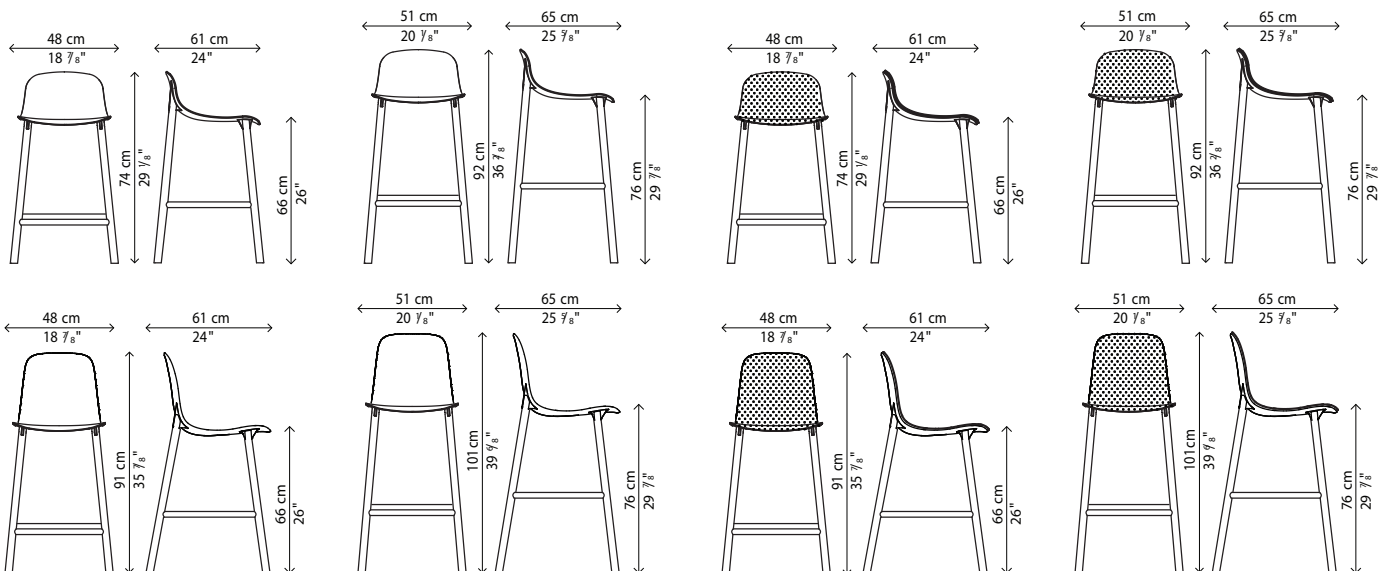
Two sinuous stools with narrow lines and an overall effect that is extremely resistant. The high stool entirely replicates the seat of the chair and becomes a comfortable bar stool, whereas the low stool has been shortened for a more harmonious overall effect. The two fin-shaped coupling elements clearly remain on the rear part, as a linking element between the frame and the base; a technical detail that is the key characteristic of the project. These two versatile seats are ideal for use in the home or as a distinguishing feature of a project at a restaurant, bar or hotel.

The Sharky stool can be fitted with light padding and upholstered in high-quality Kvadrat® fabric in different colours that create many combinations.

materials:

Legs in Beech, European Oak and Lacquered Wood - Seat in Polyethylene

Upholstery Options: Kvadrat Divina Melange 2 , Kvadrat Divina MD, Kvadrat Field & Maharam Scuba

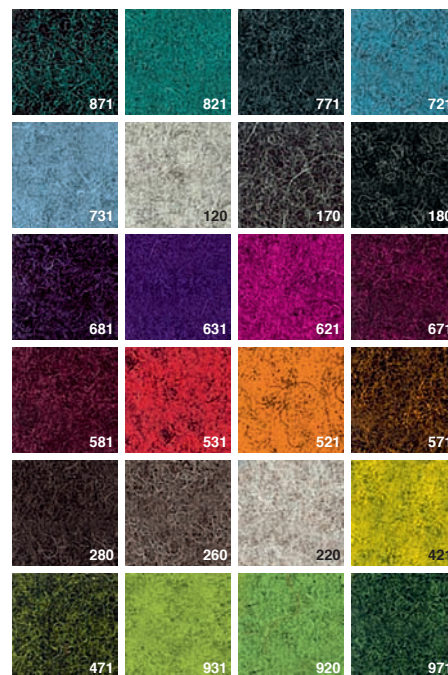


Wood base:

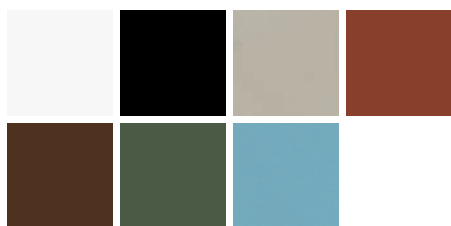


Polyurethane body:

“Divina Melange 2” fabric by Kvadrat®:



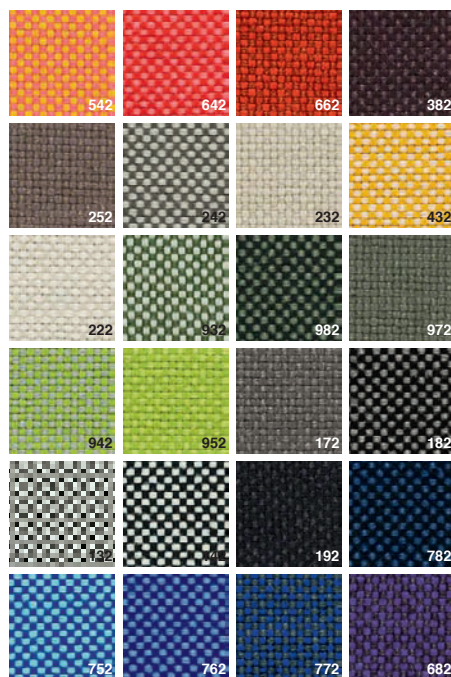
Aluminium base:



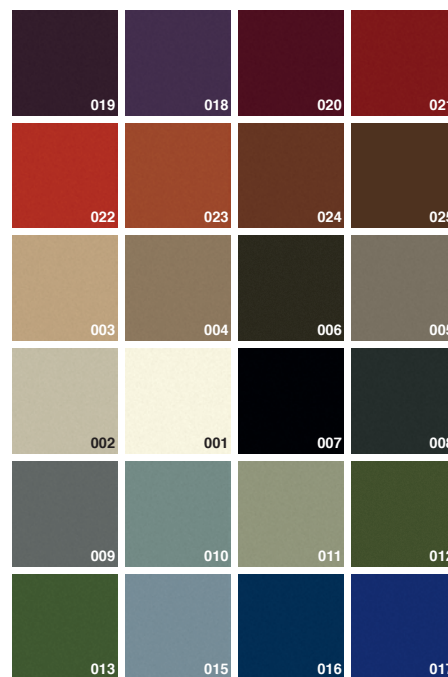
“Divina MD” fabric by Kvadrat®:



“Field” fabric by Kvadrat®:



“Scuba” fabric by Kvadrat®:



Important:
seat stitching -
only for the version with
Scuba fabric.

