

mdf italia



© COPYRIGHT 2021 MDF ITALIA SRL SOCIETA' UNIPERSONALE

2017

SIGN MATT

Designed by Piergiorgio Cazzaniga

INDOOR/OUTDOOR

Sign by Piergiorgio Cazzaniga, with its sinuous and ergonomic lines, is a chair and armchair project, representing a turning point for MDF Italia collection since 2006. In 2017, the collection was renewed with Sign Filo, Sign Baby and Sign Matt: the latter represents the natural development of the original model, always coming both as a chair and comfortable armchair.

Thanks to its matt finish, available in five different shades, it can be inserted harmoniously in every environment, both indoor and outdoor. Its unique and original shape stands out in outdoor spaces such as gardens, terraces, parks, porticoes, beaches.

The plus of Sign Matt

- . An unmistakable iconic line
- . Fit for indoor and outdoor spaces
- . Available as a chair and as an armchair
- . Five different colours.

STRUCTURE

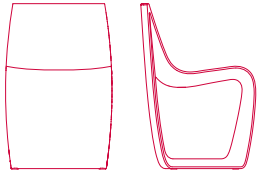
The single-material load-bearing structure is in polyethylene (PE), moulded with rotational moulding technology.

OUTDOOR USE

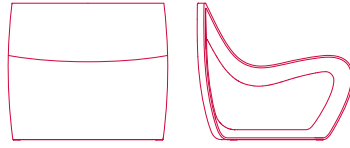
The particular resistance of polyethylene and its simple maintenance make Sign Matt perfect both indoors and outdoors.

A version with a dripping hole is available for both the chair and the armchair. The hole cap is in white for the white and cement finishes, in black for the mud, navy blue and corten finishes.

SIGN MATT



L48 D51.5 H74.5 cm
seat H47 cm
weight 10 kg



L72 D71 H62 cm
seat H38.5 cm
weight 20 kg



Position for outdoor use in
order to avoid rain water collection

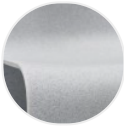
Finish options

STRUCTURE

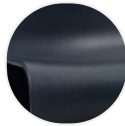
Plastic



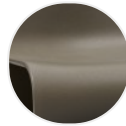
polyethylene
matt white



polyethylene
matt cement



polyethylene
matt navy
blue



polyethylene
matt mud



polyethylene
matt corten