

Altar

Designer: EWE Studio
Year: 2023

In these consoles designed by Lorenzo Bini, modern and contemporary works are captured by a marble slab in an irregularly shaped plane. A few details are enough, and the designs already defined in the lines traced by Jean Arp and Gianni Colombo take on a new expression. Three legs, created through the juxtaposition of four slightly offset strips of the same marble, support the tops and are a great homage to the art of these artists.

Developed by Tacchini in Italy

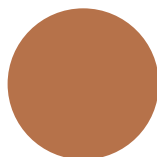
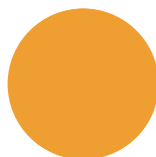
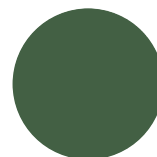
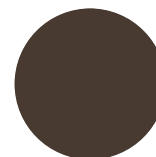
Dimensions (cm)

Cod. 1ALT50



W 50 D 48 H 50

Finishes

T178
Plaster CementT179
Terracotta CementT180
Green CementT181
Yellow CeramicT182
Green CeramicT183
Brown CeramicT184
Cedar



EWE Studio

EWE is a design studio based in Mexico City, devoted to the preservation and advancement of Mexico's rich artisan heritage, while embracing new mediums and languages for the execution of limited-edition sculptural and functional objects. With a desire to reflect tradition as part of the natural flow of design, EWE praises diverse techniques, blends primitive roughness with pristine surfaces, and uses natural empathic materials that appeal to the senses. Mexican history is EWE's inspiration for forging new ideas that have substance and meaning. EWE Studio was founded in 2017 by gallerist and creative director Age Salajõe, and designers Manuel Bañó and Héctor Esrawe. EWE shows with Oliver Gustav in Denmark, with Future Perfect in the United States, with Objective Gallery in China and New York, with Collectional Gallery in the United Arab Emirates, and with MASA in Mexico.