





Victoria

Designer: David / Nicholas
Year: 2021

Lebanese design duo David/Nicholas are behind this modular system comprising armchairs, corner sofas and chaises longues offering luxurious comfort.

A tubular supporting frame – available in polished chrome, matt black chrome and black lacquer – serves as the product's base, giving it a floating appearance and creating a sort of crown at the back. A series of small tables with mirrored tops completes the line; they can be combined with the other elements to create endless compositions. Thanks to its modular nature, Victoria can be arranged and reconfigured as desired, depending on the space where it is placed. This feature makes it particularly suitable for use in the contract sector.

Awards:
2021 Archiproducts Design Awards
Developed by Tacchini in Italy

Dimensions (cm)

Cod. OVIC1430



W 84 D 143 H 74 cm
H seat 42,5 cm

Cod. OVIC1431R



W 84 D 143 H 74 cm
H seat 42,5 cm

Cod. OVIC1431L



W 84 D 143 H 74 cm
H seat 42,5 cm

Cod. OVIC1432



W 84 D 143 H 74 cm
H seat 42,5 cm

Cod. OVIC900



W 80 D 90 H 74 cm
H seat 42,5 cm

Cod. OVICA902



W 80 D 90 H 74 cm
H seat 42,5 cm

Cod. OVIC901L



W 80 D 90 H 74 cm
H seat 42,5 cm

Cod. OVIC902



W 80 D 90 H 74 cm
H seat 42,5 cm

Cod. OVICA900



W 60/81,4 D 90
H 74 cm
H seat 42,5 cm

Cod. OVICA901R



W 64/85,4 D 90
H 74 cm
H seat 42,5 cm

Cod. OVICA901L



W 64/85,4 D 90
H 74 cm
H seat 42,5 cm

Cod. OVICA902



W 68/89,4 D 90
H 74 cm
H seat 42,5 cm

Cod. 1VIC80



W 78 D 78 H 25 cm

Cod. 1VIC50



W 50 D 78 H 25 cm

CAD Files:
3D (.dwg, .3ds)
2D (.dwg)

Download CAD
files at tacchini.it/en/downloads

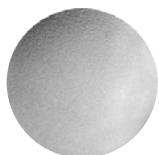
Materials description

Internal structure: 18 mm thick poplar plywood, with 45 × 45 mm solid fir crosspieces with elastic straps.

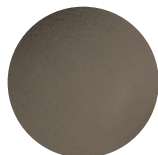
Padding: multi-density polyurethane foam, last layer in memory foam.

Structure: iron tube Ø 40 mm, polished chrome, matt black chrome and black lacquer.

Cover: not removable.

Structure

T23
Polished Chrome



T27
Matt Black Chrome

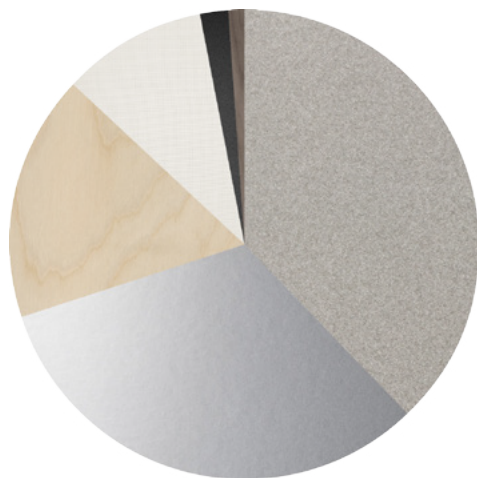


T07
Black RAL 9011

Top

T146
Smoked Plissé Mirror

Materials informations



Polyurethane foam	38%
Iron	32%
Upholstery	10%
Poplar plywood	17%
Elastic straps	2%
Solid fir	1%

Polyurethane

Flexible expanded polyurethane is a solid elastic polymeric material with open cell structure. It is a non-toxic material and above all free from ozone-damaging components. Production and processing of the polyurethane we use meet the objectives of the new policy of ensuring the protection of human health and of the environment. We focus in particular on the choice and use of the types of density of polyurethane suitable for preserving over the years the features of load capacity, elasticity and resilience. For products used in public spaces flame-retardant expanded polyurethane is chosen, tested and certified according to international regulations.

Marble

Marble is a natural material obtained through a metamorphic process from sedimentary rock such as limestone or dolomite, causing crystallisation of the calcium carbonate. The specific features of the material can be seen in the marble we use which is worked by artisans with machinery and polished with natural waxes which go to respect the actual essence of the nature of the marble.

Wood

Wood is a renewable raw material. All products derived from wood, such as for example plywood, have the advantage of being able to be machined more easily than wood and do not deform. The timber we use – solid or plywood – comes mainly from European and Russian forests and is seasoned to specific values of humidity with tests. Most of the structures of the products in the collection have a frame in solid pine or ash, or in beech or poplar plywood.

Metal

The need to combine complex yet lightweight shapes with resistant materials necessarily involves the use of metals such as steel and aluminium. products in polyurethane foam are made with an inner steel frame for adding strength to the structure. The bases are in tubular metal which can be chromed with a gloss or satin finish or painted with epoxy powders.

Recyclability

All Chill-Out elements are 100% recyclable when fully separated. Tacchini undertakes on-going research and development, with efforts made to introduce products which are a perfect combination of function and safety without jeopardizing the final design of the same articles. During production attempts are made to minimize noise and emission levels and to reduce rejects as far as possible. All the single materials which make up the production process, once disassembled, can be reused several times, maintaining a high quality standard.

Packaging

Chill-Out element is dispatched already assembled. It is protected by tissue paper and cellophane to protect the covering from dust and direct contact with the cardboard. The product is packed in rigid cardboard boxes suitable for world export. Manufacture of the packaging observes the criteria for recovery both as recycling and energy recovery and composting.

Once a product reaches the end of its life cycle it has to be eliminated.

To discover more about Tacchini environmental policy please visit: www.tacchini.it



David/ Nicholas

David Raffoul and Nicolas Moussallem have established a global presence since they set up their studio, David/ Nicolas, in Beirut in 2011. Through their interdisciplinary approach to their retro-futurist design aesthetic, they have staged several exhibitions and collaborated with established international brands like Vista Alegre, CC-Tapis, Moooi, Vogue Italia. David/ Nicolas met at the Lebanese Academy of Fine Arts, where they both studied for a Bachelor's degree in Interior Design, going on to undertake Masters degrees at the Scuola Politecnica Di Design in Milan. After graduating, both undertook internships with international design studios, Nicolas going on to freelance for a year in Beirut while David worked as designer at Fabrica, in Treviso, Italy. Since 2016, they are represented by Carpenters Workshop Gallery. Their solo exhibition "Supernova" was shown in both Paris and New York and is continuously expanding into a wide range of carefully crafted pieces.