



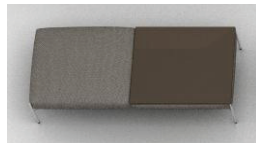
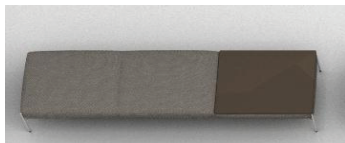
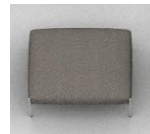
chill-out gordon guillaumier

A modular system of sofas, armchairs, ottomans or small tables which express a simplicity and precision of harmony and wellness. The modularity becomes total freedom of composition and setting of spaces. Chill-out system has been designed for both habitat and public spaces. It can be a single element or a modular composition with various shapes and dimensions. The thin and elegant proportions express lightness with its light, metallic base supporting the simple, clean and comfortable volumes. Sofas, armchairs and benches can be integrated with small square and rectangular tables realized in white Carrara or Basaltina marble in mat finish. The metal frame is available in satin chrome or epoxy coated versions.

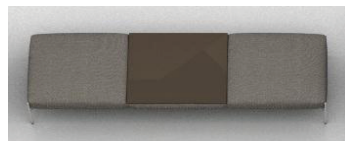
materials

Upholstered with base in chrome or painted steel in white or grey. Table tops in Carrara or Basaltina marble.

dimensions

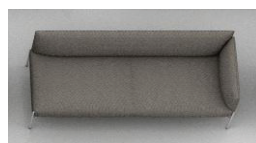
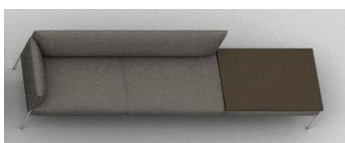
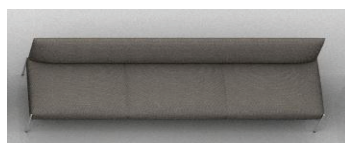
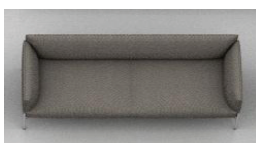
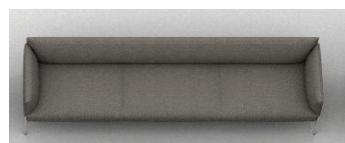


27-1/2" x 23-7/8" x
17-3/8"sh

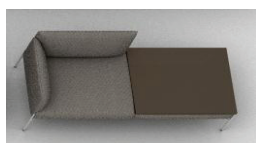


55-3/8" x 23-7/8" x
17-3/8"sh

83-1/2" x 23-7/8" x
17-3/8"sh



83-1/2" x 23-7/8" x
28"ht 17-3/8"sh



55-3/8" x 23-7/8" x
28"ht 17-3/8"sh

27-1/2" x 23-7/8" x
28"ht 17-3/8"sh



55-3/8" x 23-7/8" x
14-1/8"ht



27-1/2" x 23-7/8" x
14-1/8"ht