



## ADD S francesco rota

Besides the seating and the table, the ADD collection has been further improved, going as far as the storage unit. The storage units of ADD-S play with modules exactly as the seating system has done since 2014 with increasing success. You can combine modules of metal available in three different heights in order to store objects, books or files very easily.

The storage unit can be either open or closed by drawers or doors, both available in several finishing. Moreover, it has two fronts, allowing you to place it conveniently in the middle of a room, as required in a modern office environment open to new interpretations.

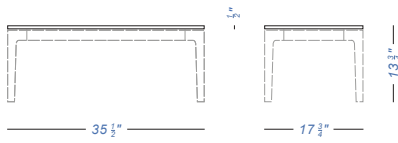
Such system allows the greatest freedom in composing and personalizing. The doors of the storage unit can be in lacquered plywood, in blanch oak or upholstered in fabric. Therefore, there is the possibility of playing with the colors of the fabric: you can mix and match –for a fresh look- or keep ton sur ton –for a refined look. In both cases, the color matching between the cushions of ADD seating and the upholstery of the storage units results in a unique, coherent style: an accurate sense of planning and lapalma's ability as well as industrial capability

### materials:

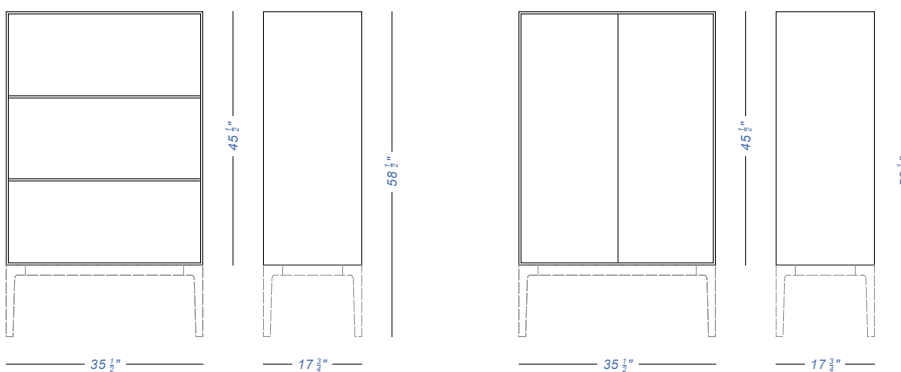
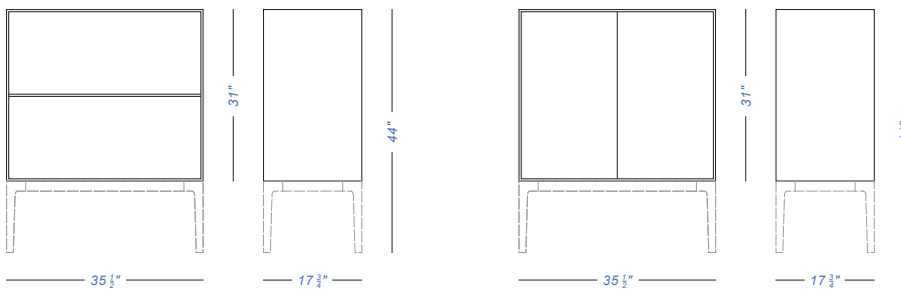
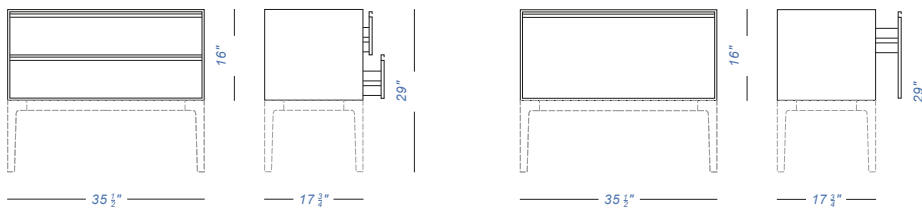
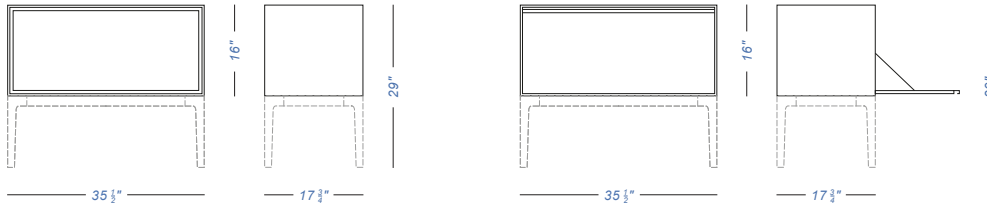
Modular system of seating and storage with aluminium frame. Storage units in powder coated metal with shelves, drawers, doors and backs in several finishes. Table tops in white Hpl Fenix®. Seating with elastic support, cushions in molded fire retardant foam with polyester fiber and removable fabric, leather or eco-leather.

## dimensions:

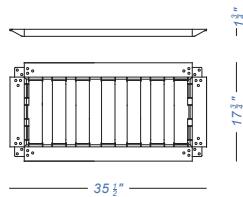
### top for small table



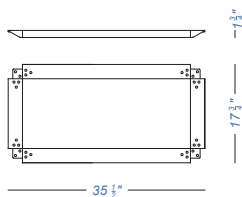
### cabinets



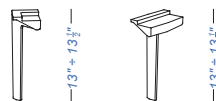
frame for seat



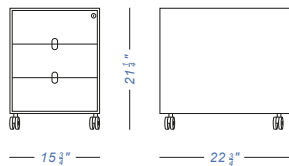
frame



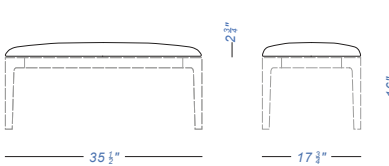
legs



drawer unit on castors



cushion



frame



powder coated:  
white

upholstery for drawers, backs and doors



fabric:  
Cava 3  
49 colors



fabric:  
Maya  
43 colors



blached oak



fabric:  
Medley  
37 colors



fabric:  
Jet  
66 colors



white lacquered



fabric:  
Swing  
29 colors



fabric:  
Hestan  
16 colors



black lacquered

backs



perforated metal  
2 colors



powder coated:  
white

cushion



fabric:  
Hallingdal 65  
58 colors



fabric:  
Steelcut 2  
37 colors



fabric:  
Medley  
37 colors



fabric:  
Jet  
66 colors



fabric:  
Remix 2  
49 colors



fabric:  
Clara 2  
24 colors



fabric:  
Swing  
29 colors



fabric:  
Hestan  
16 colors



fabric:  
Cava 3  
49 colors



fabric:  
Divina MD  
27 colors



fabric:  
Maya  
43 colors



eco-leather  
10 colors



fabric:  
Steelcut Trio 2  
49 colors



fabric:  
Divina Melange 2  
24 colors



fabric:  
Style  
28 colors

drawer unit on castors



powder coated:  
black



powder coated:  
white

top



HPL fenix  
white