



slim up low table maurizio perregalli

Minimalist low table in four sizes

materials:

solid drawn steel tubing frame, sheet steel top in copper black, semi-opaque white, and artistic rusty finish

dimensions:

12.2" x 12.2" x 18.1"H

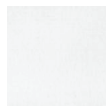
12.2" x 12.2" x 25.2"H

16.1" x 16.1" x 18.1"H

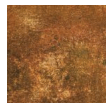
16.1" x 16.1" x 25.2"H



Copper Black



Semiopaque White



Artistic rusty treatment